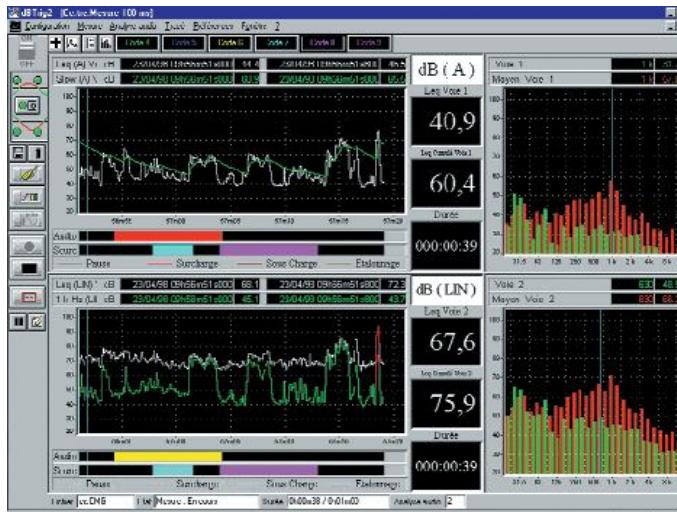




VIBRATION MONITORING with dBTRIG

A brand of **acoem**



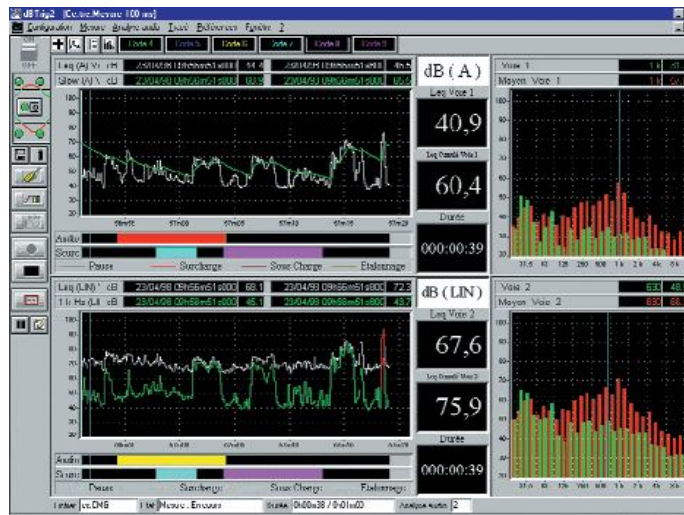


dBTRIG

5.4

New Features

STILL A POWERFUL SOFTWARE



Sound level meter

Vibration Analyzer

Perfectly versatile

Unrivalled triggering capabilities



NEW VIBRATION INDICATORS



PPV: Peak Particle Velocity

Defined in BS5228-2:2009

The maximum value of any one of the three orthogonal component particle velocities measured during a given time interval

PVS: Peak Vector Sum

Defined in BS7585-2:2009

square root of the summed squares of all three velocity components at a particular time (i.e. the maximum vector sum)

NEW FREQUENCY WEIGHTING

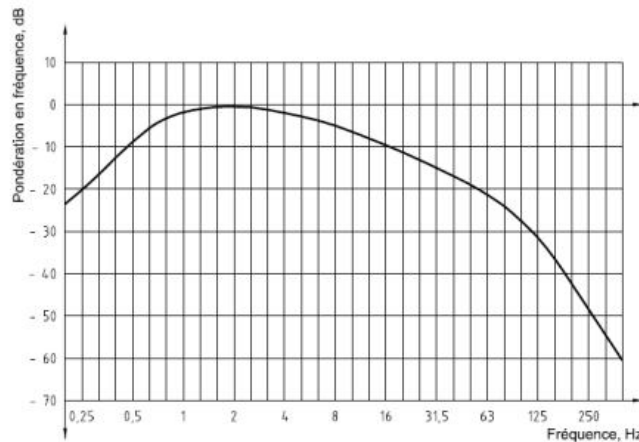


Figure A.1 — Pondération en fréquence, W_m , avec l'accélération comme grandeur d'entrée
(illustration schématique)

ISO2631-2: Wm frequency weighting

NEW ACOUSTIC INDICATORS

toto_LAeqsT+LexPT_120716_151236.CMG				
Fichier	toto_LAeqsT+LexPT_120716_151236.CMG			
Commentaires	tests bureau FRB			
Début	15:12:38:000 lundi 16 juillet 2012			
Fin	15:14:40:800 lundi 16 juillet 2012			
Durée élémentaire	100ms			
Total périodes	1248			
Voie	Type	Pond.	Min.	Max.
bureau	Leq	A	10	90
bureau	LexP[50dB 1m]	A	40	60
bureau	LeqS[10s]	A	30	70
bureau	LexP[50dB 1m]	A	40	60
bureau	Leq	Lin*	30	90
N° de série appareil	1506			
Type d'appareil	dB4			
Fuseau horaire	(UTC+01:00) Bruxelles, Copenhague, Madrid, Paris			

LAexpT: Noise exposure level

LAeqsT: Sliding Leq

Same as in DUO

NEW INDICATORS MANAGEMENT

20120720 test4 mes periodirc weekend_120720_161552					
Fichier	20120720 test4 mes periodirc weekend_120...				
Commentaires	periodic weekend depart 17h15				
Début	17:15:52 vendredi 20 juillet 2012				
Fin	00:59:01 samedi 21 juillet 2012				
Durée élémentaire	1s				
Total périodes	27789				
Voie	Type	Pond.	Min.	Max.	
Ch. 1 - X	Leq	Lin	70	90	
Ch. 1 - X	Crête	Lin	80	110	
Channels 1,2,3	PPV	Lin	90	120	
Channels 1,2,3	PVS	Lin	90	120	
Ch. 2 - Y	Leq	Lin	70	90	
Ch. 2 - Y	Crête	Lin	80	100	
Ch. 3 - Z	Leq	Lin	80	100	
Ch. 3 - Z	Crête	Lin	90	120	

Logged as classical indicators

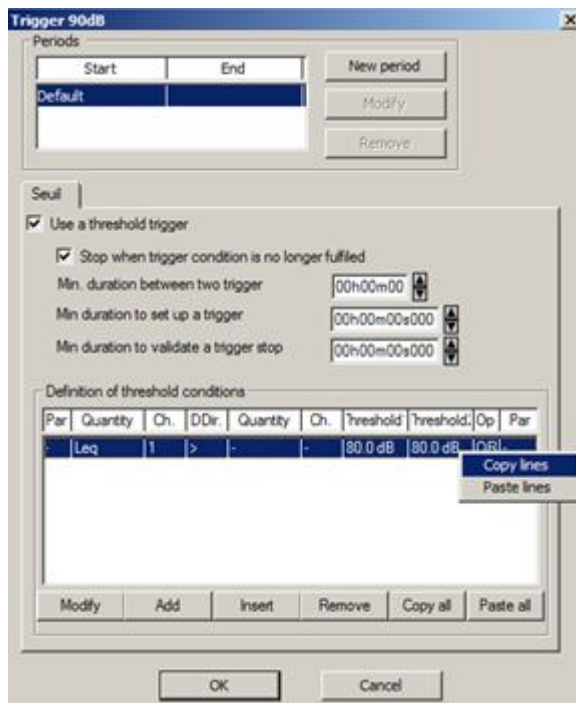
Same IT as other indicators

Available for triggering

Stored in the measurement session

Available in dBTrait

TRIGGERS MANAGEMENT WITHIN EXCEL



Define simple threshold

Copy/Paste to Excel

Modify and Improve in Excel

Copy/Paste to dBTrig

Parameters coherence checking

Optimized setup preparation



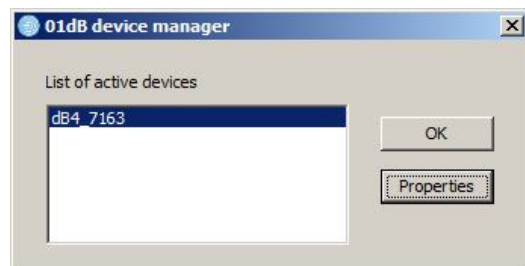
IMPROVED dB4 MANAGEMENT



New driver

New optimized offset adjustment

Use 01dB Device Manager



COMPATIBLE PLATFORMS



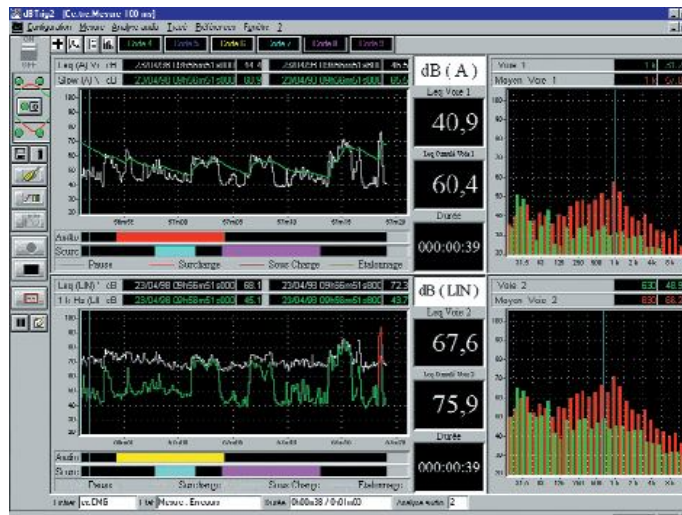
NetdB

8 channels with dBTrig
Ethernet
ICP/Direct sensors

dB4

4 channels
USB
ICP/Direct sensors

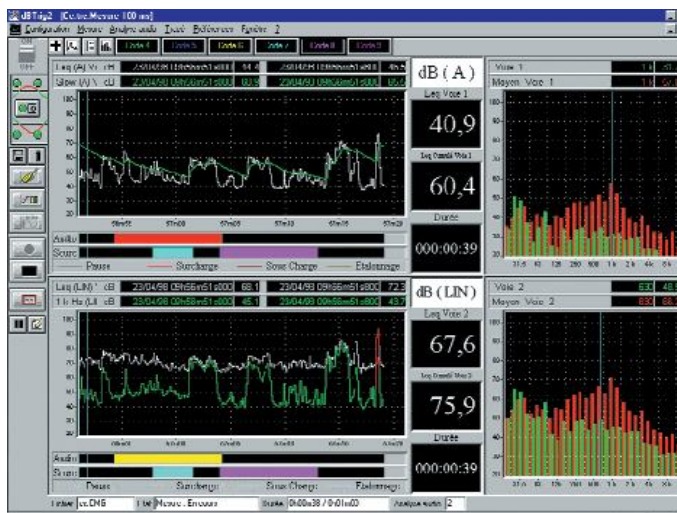




dBTRIG

5.4

Vibration Monitoring



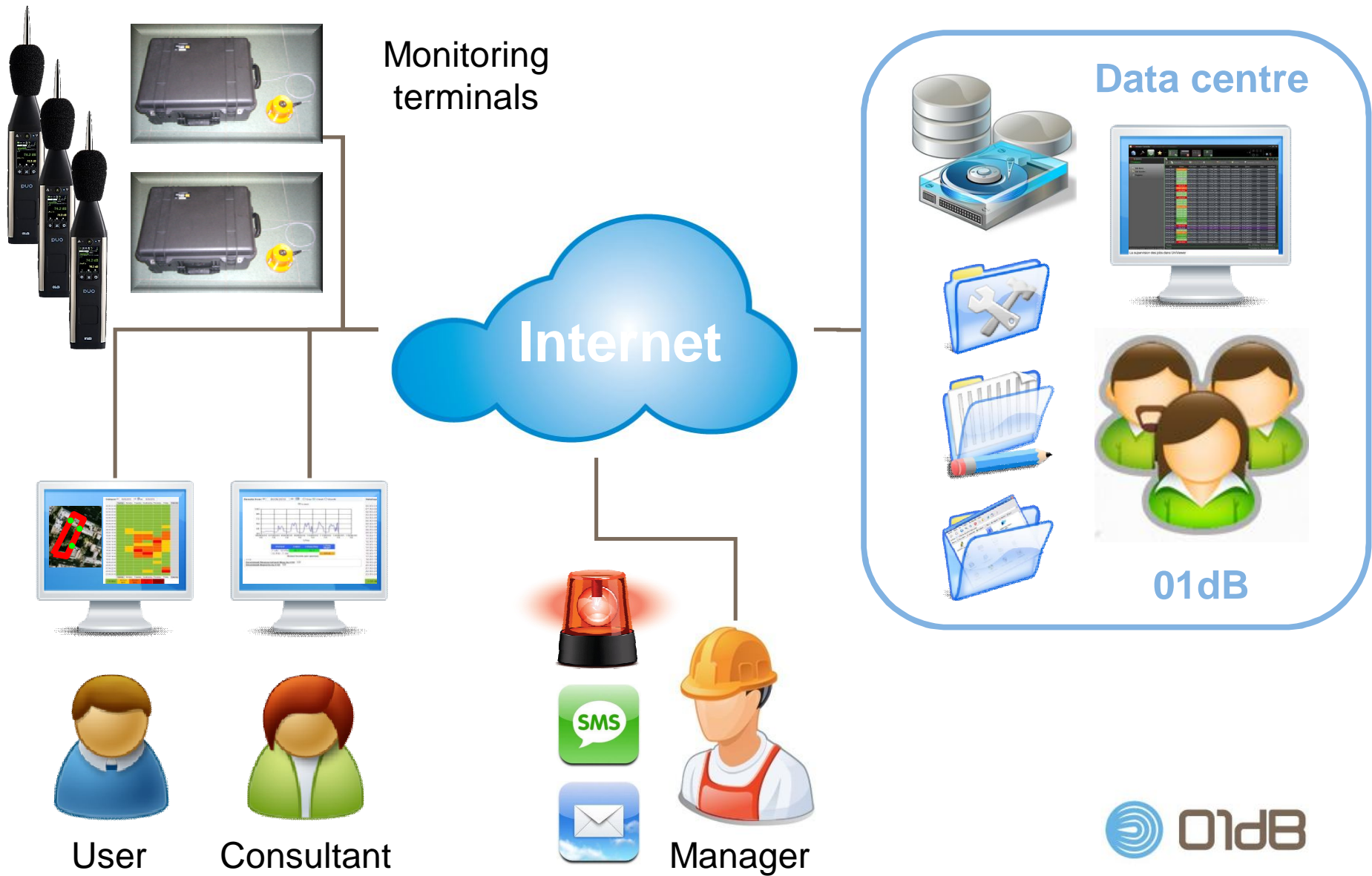
dBTrig for Monitoring ≠ product

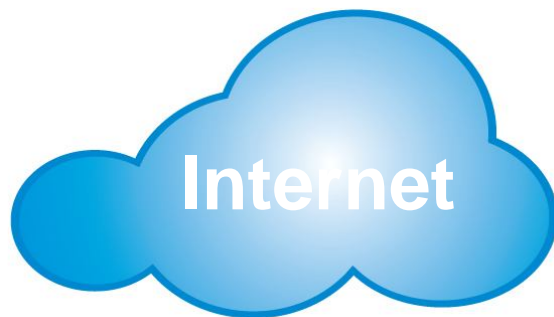
Solution less integrated than DUO

But powerful and improved

Available in project mode

Ask us to get the best solution





Remote configuration

Survey of data storage & transfer

System health monitoring

Real-time alerts by E-mails

Web Publication

Data streaming (live)

Automatic reporting

Already available



Remote configuration

Survey of data storage & transfer

System health monitoring

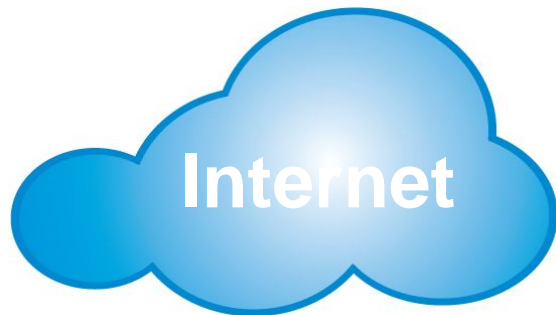
Real-time alerts by E-mails

Web Publication

Data streaming (live)

Automatic reporting

Already available



Available soon

Remote configuration

Survey of data storage & transfer

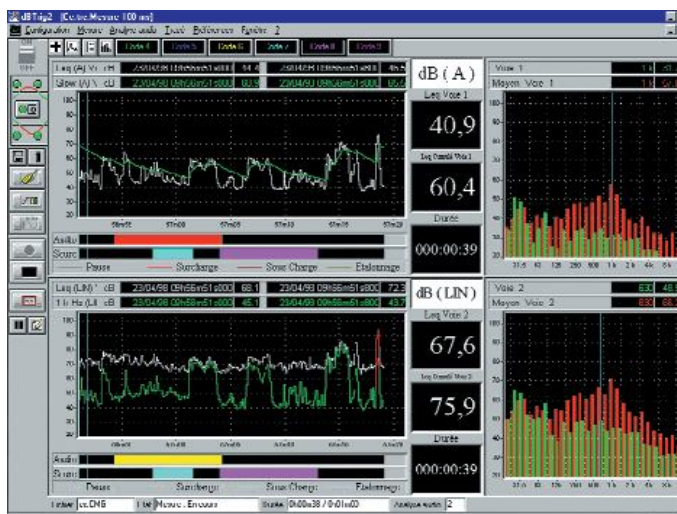
System health monitoring

Real-time alerts by E-mails

Web Publication

Data streaming (live)

Automatic reporting



dBTRIG

5.4

On Site

**Ready for
remote
vibration
monitoring**



dBTrig/dB4 Integration

dB4 4ch analyzer

dBTRIG software

3G connectivity

UPS Backup battery

BRITISH TELECOM TUNNEL



PPV display in real-time on website

Reported every day: Max PPV over 24h + 1h PPV values

PPV/PVS based alerts (Trigger @ 20mm/s, 1Hz-200Hz)

Powered by 01dB Web Monitoring



DUBLIN METRO NORTH CONSTRUCTION

Impossibile visualizzare l'immagine. La memoria del computer potrebbe essere insufficiente per aprire l'immagine oppure l'immagine potrebbe essere danneggiata. Riavviare il computer e aprire di nuovo il file. Se viene visualizzata di nuovo la x rossa, potrebbe essere necessario eliminare l'immagine e inserirla di nuovo.

**2 levels of alert (AMBER and RED),
varying for the 4 monitored areas**

Most critical: eye laser surgery

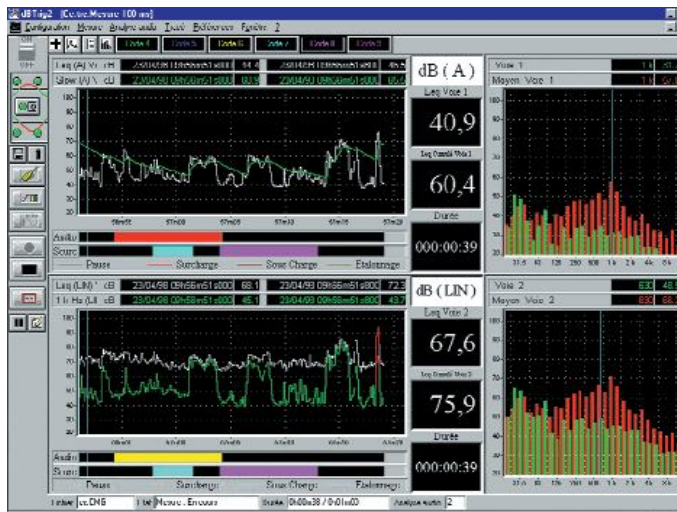
AMBER trigger: 10µm/s

**Approx. 5 alerts per day,
during a 6-month operating period**

Powered with 01dB Web Monitoring



dBTRIG 5.4



Vibration Monitoring